

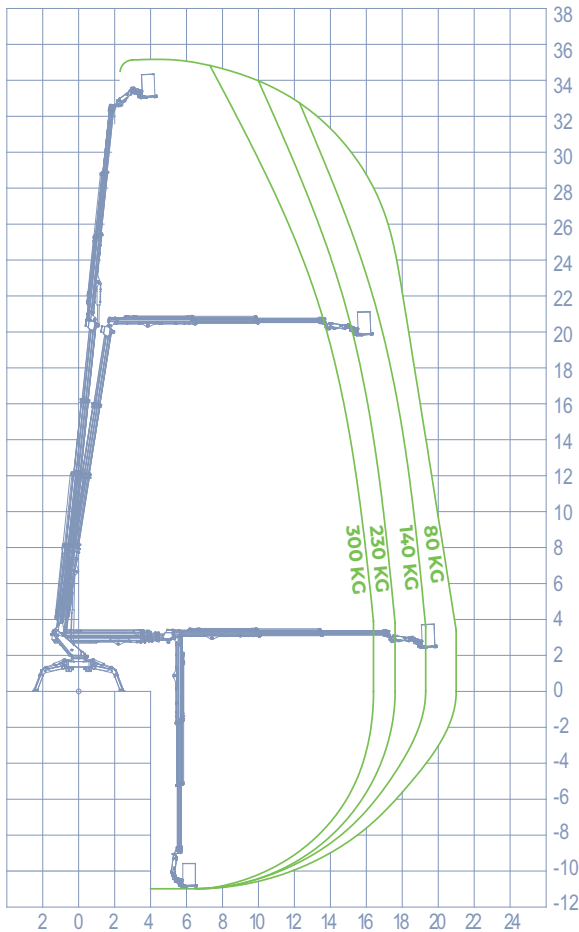


## STANDARD ACCESSORIES

### DATA SHEET

- Extendable basket
- Electric hour-counter
- Manual hand pump
- 230V electric socket in the basket
- Multifunction remote control
- Auxiliary electric pump 230V-50Hz Flanged
- holding valves
- Diesel engine
- **Automatic closing**
- **Automatic stabilization**

## WORKING DIAGRAM



## INFO

- OUTRIGGERS**  
Z+Z
- WORKING HEIGHT**  
35,00 m
- NEGATIVE WORK**  
-11,00 m
- BASKET HEIGHT**  
33,00 m
- MAX OUTREACH**  
21,00 m
- LOAD CAPACITY**  
80 KG  
140 KG  
230 KG  
300 KG
- CONTROLS**  
Electro-Hydraulic
- TURRET ROTATION**  
400°
- GVW**  
8,2 ton
- SIZE**  
4750 x 5200 mm  
3000 x 6700 mm
- BASKET ROTATION**  
90° + 90°
- LIFTING HOOK**  
500 kg

## SIZE

